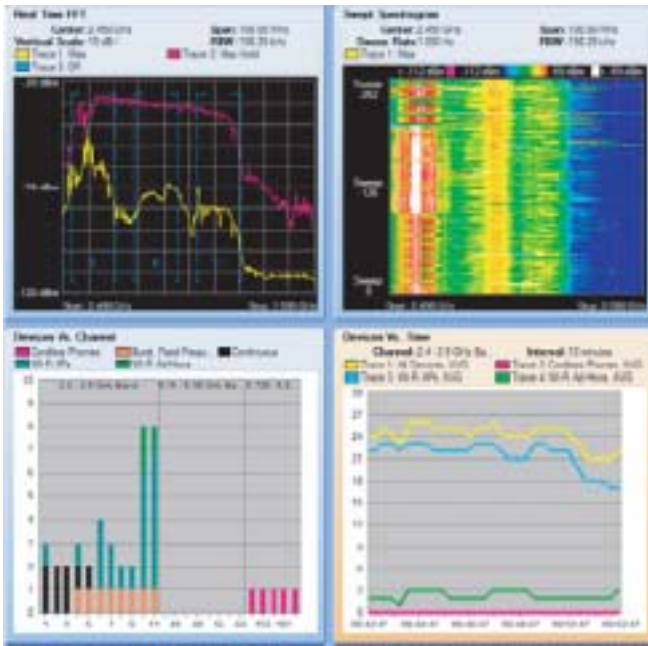


# AirMagnet Spectrum Analyzer



## AirMagnet Spectrum Analyzer – Wi-Fi Spectrum Control

Physical Layer  
 Wi-Fi 가 2.4GHz  
 5GHz Interfering

AirMagnet Spectrum Analyzer  
 Wi-Fi IT  
 Interference

### AirMagnet Spectrum Analyzer :

- RF
- Wireless
- 2.4-2.5GHz 4.9-5.9GHz Wi-Fi
- 가 View FFT, Duty Cycle, Swept Spectrogram
- RF Windows XP Laptop
- 가

- Multiple Configurable Chart 10

가

RF 가 가  
 AirMagnet Spectrum Analyzer :

가 가 Wireless Chipset  
 Wi-Fi 가 RF  
 AirMagnet Spectrum Analyzer :

- Spectrum Fingerprinting 가 Wireless Interference IT 가

- Spectrum Management Wi-Fi Spectrum 가

- Device Finder Interference

- Session Record and Playback 가 File 가

WLAN RF 가

- AirMagnet Spectrum Analyzer Spectral Fingerprinting

- Wireless AirMagnet Spectrum Analyzer Wireless

가

- Real-Time FFT Plot
- FFT Duty Cycle Plot
- Spectrogram Plot
- Power vs. Freq Plot
- Power vs. Time Plot
- Active Device Chart
- Devices vs. Channel Chart
- Devices vs. Time Chart
- Duty Cycle vs. Channel Chart
- Duty Cycle vs. Time Chart

- AirMagnet Survey AirMagnet Spectrum Analyzer AirMagnet Survey Wi-Fi

- RF PC  
 - Windows XP 1 2  
 - Cardbus Type II Slot  
 - 512Mbytes RAM  
 - 1GHz Pentium CPU  
 - 1024 x 768

- Technical Specification

Frequency	2.4-2.5GHz (802.11b/g ISM Band)
	4.9-5.9GHz (Public Safety, 802.11a)
	0 ~ 55
	-20 ~ 65