

# VLD-161600 (16x16 DVI KVM Matrix Switch)

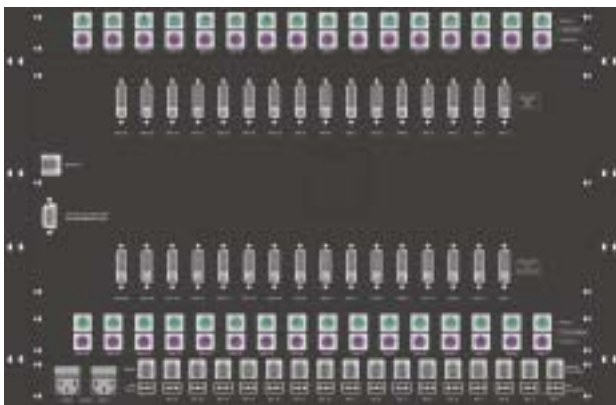


Grouping Controller

VLD-161600 16  
 16 PC 16x16 DVI KVM  
 Matrix Switch  
 KVM Switch Keyboard-Video-Mouse  
 VLD-161600 1920 x  
 1400 DVI  
 16 PC 1 16  
 VLD-161600  
 CPU

CPU 16 CPU 16 User Station  
 CPU 가 Controller가 CPU

- VLD-161600 : DVI Matrix Switch (1)
- MSO-16 : Remote Selector (1~16 )
- Grouping Controller Program (1)
- Keyboard-Mouse ( )
- DVI-DVI ( )
- RJ-11 to RJ-11 (MSO-16 )
- RJ-11 to DV9F (Grouping Controller 1 )

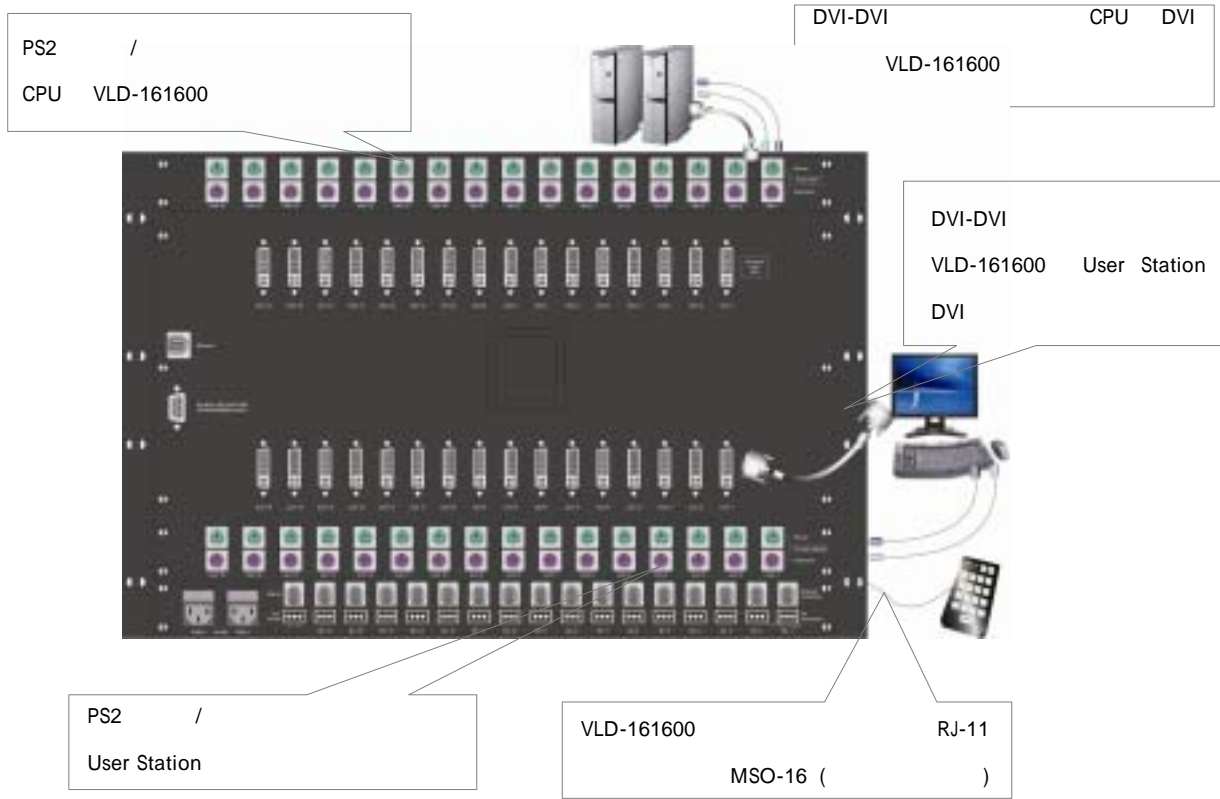


<VLD-161600 >

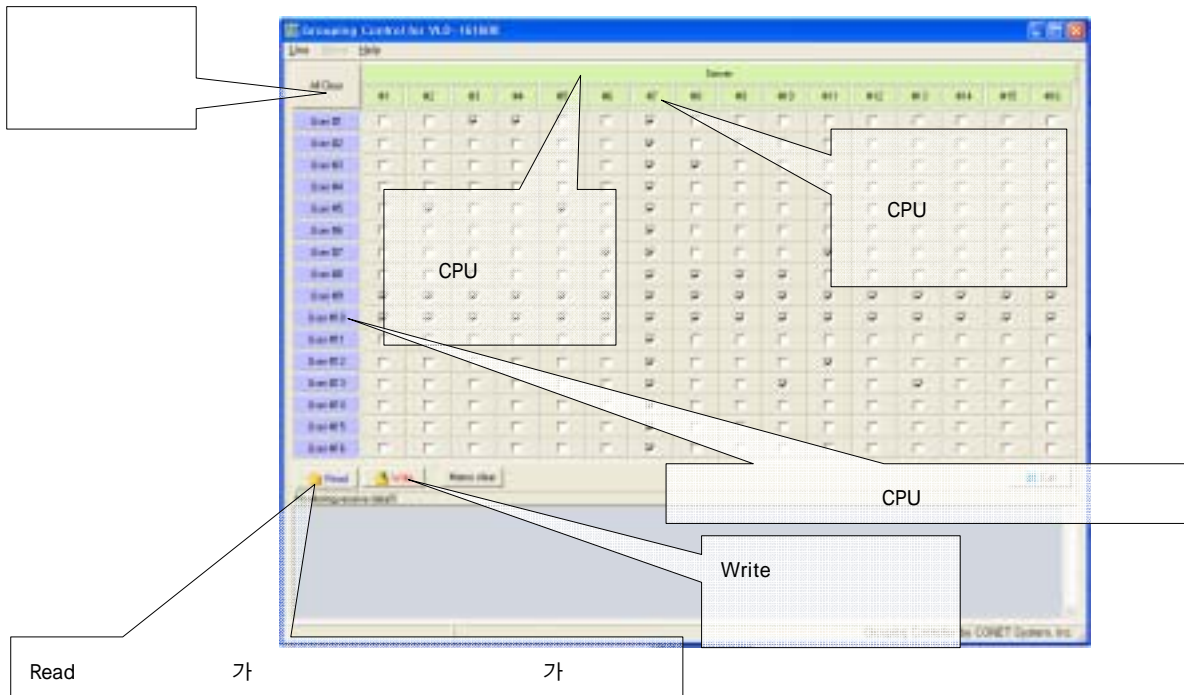


<MSO-16 Remote Controller>

# VLD-161600 (16x16 DVI KVM Matrix Switch)



## Group Controller



# VLD-161600 (16x16 DVI KVM Matrix Switch)

VLD-161600 Specifications		
	1920 x 1400	
	From CPU	/ PS2 16 DVI 16
	To User Station	/ PS2 16 DVI 16
	Remote Controller	RJ-11 16 (1 ~16 ) RJ-11 1 (Master )
	I/O	1 ~16 16 External Power 1
	RS-232	
	RJ-45	
	220VAC Power 1 Power 2 On/Off	
(W x H x D)	483 x 314 x 315 mm	
MSO-16 Specifications		
	RJ-11 VLD-161600 . 1km	
LED	Red	LED. 16
	Green	가 LED. 16
User	0~9, A~F 16 가 User 1 0 , User 10 9 , User 16 F	