

Fiber Converter-Rack Mount

[FRM301 Series]



FRM301 Line Card



FIB1 Series

FRM 301 Series 3U Media Converter Rack 16
 Converter Redundant Power SNMP
 Management 가 10Base-T, 100Base-TX,
 10 / 100 Base Multi Mode(2km) Single Mode
 (120km) Fiber, WDM(20km) Converter Card
 . FRM 301 Series Rack
 Type (FRM 301) (FIB 1 Series)

가 100%
 NMS

, Loss

, FRM 301

SNMP Base Management Software GUI SNMP Manager ,
 Windows 9X/ME/CP/NT/2K

LED		
PWR	Light	Power On
	Light / Flash	SNMP
U / 100	Light	100M
	Off	10M
F / Full	Light	FX Port Full Duplex
	Off	FX Port Half Duplex
U / Full	Light	UTP Port Full Duplex
	Off	UTP Port Half Duplex
F / Link	Light	FX Port Link
	Off	FX Port Link
U / Link	Light	UTP Port Link
	Off	UTP Port Link
	Flash	UTP Port

- 1) Link-Loss Forwarding
- 2) Loop-Back Test
- 3) Get Remote CPE Status
- 4) Frame Length Selectable

FRM301-10/100 – Line Card Type

- IEEE802.3 10Base-T, IEEE 802.3u 100Base-FX 100Base-TX
- 6 LED
- 2 DIP Switch Setting
 - SW1 : FX Port Duplex Setting
 - SW2 : Loop Back Test Function Setting
- * SW2가 On LED Remote CPE Unit

- Power : +9V/ 1A Maximum, DC
- : 0 ~70 ()
 0 ~50 ()
 10~90% ()
 20~80% (Non Condensing)
- : 122.6mm x 85.6mm x 20mm (L x W x H)

LAN Interface Specification

- RJ-45 Ethernet Straight Cross-Over
- Ethernet 10Base-T, 100Base-t, 10/100Base-T ()
- 10Base-T, 100Base-TX Transmission Packet Rate : 14880 per Second / 148800 per Second
- Full-Duplex, Half-Duplex, Auto

Optical Interface Specification

- Transceiver Connector Type : ST, SC, WDM (SC, Bi-Directional), LC & MT-RJ
- Wavelength –
 - Multi-mode : 850nm;
 - Singlemode (50km) : 1310nm
 - (singlemode 120km : 1550nm)
 - WDM : 1310/1550nm ; LC : 1310nm
- Full-Duplex, Half-Duplex
- Attenuator Auto –Adjustment

FRM301-10/100 – Line Card Type

- ST, SC 9/125 μ m Single Mode Fiber
- WDM Converter Fiber Cable TX RX
- Single Mode 120km
- N-Way Auto Negotiation
- Link-Loss-Forwarding LLF
 - DIP Switch Loop-Back
 - DIP Switch Remote
 - 가 Frame Length
 - 64~1518 / 1522 Bytes for Normal
 - 64~1536 Bytes for Special
- Tag, VLAN, Spanning Tree Fail-over Links & QOS

FRM301 Series – Rack Mount Type

- 3U , 16 (16)
- Redundant Power Dual Power Module, Cooling Fan
- Hot Swap Converter Card –

Fiber Converter-Rack Mount

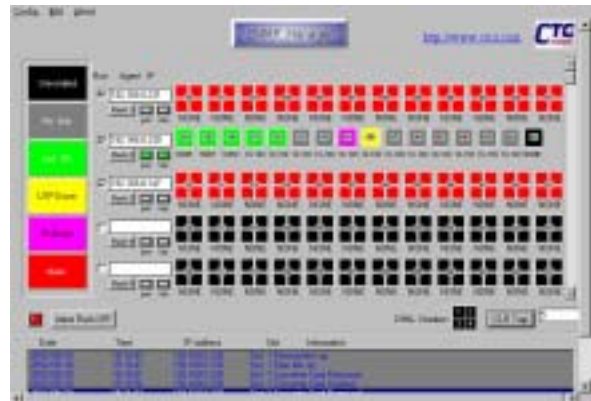
- Auto Recovery Function () 가
- 10/100Base Auto Negotiation Capability
- FCC Part 15 Class A, CE Mark
- MTBF : 38,000 ()
- 가 (AC110~240V, DC24V, DC48V)
- , Cooling Fan
- SNMP Window Base GUI 가



NMS

- NMS 가 :
 - 1) Terminal Mode : Local RS-232 Serial Craft Port Terminal PC Configuration Maintenance, Setting Alarm Menu-Driven List
 - 2) MIB File SNMP : MIB-II Standard RJ-45 10/100 Ethernet Port Configuration Community String, Community Authority, Trap IP SNMP Configuration
 - 3) GUI SNMP Manager : RJ-45 10/100 Ethernet Port Configuration , Windows Application Report & Alarm Polling
- System Polling Report Alarm Message PC Terminal NMS Mode
- Configuration
- NMS Default Setting Configuration
- FRM Series가 Configuration
 - 1) Ethernet Speed
 - 2) Ethernet Duplex Status
 - 3) Fiber Duplex Status
 - 4) Auto Negotiation
- Alarm Display ;
 - 1) Link Status (Link OK/ Link Down)

- 2) Power Fail Alarm / Power Fan Detector
 - 3) Cooling FAN Fail Alarm
- Terminal Mode Telnet
 - Firmware TFTP
 - Card Configuration Line Card
 - SNMP Control Card System Configuration Default Setting 가



<GUI SNMP Manager Main Display>

Ordering Information

FRM301-Chassis	Rack-Mount Chassis AC DC
Power Card	
FRM301-AC1	Single AC Power Plug-in Module
FRM301-AC2	Redundant AC Power Plug-in Module
FRM301-DC1	Single DC-48V Power Plug-in Module
FRM301-DC2	Redundant DC-48V Power Plug-in Module
Optional SNMP Card	
FRM301-SNMP	SNMP Plug-in Card, Terminal Mode and MIB File
FRM301-GUI SNMP Manager	Windows GUI

- Converter Card
 - 1) Ethernet Type : 10Mbps 10/100Mbps
 - 2) Fiber Type : Single Mode / Multi Mode / WDM / LC Type
 - 3) Connector Type : ST SC
 - 4) :
 - i. Multi Mode – 2km
 - ii. Single Mode – 15 / 30 / 50 / 120km
 - iii. WDM – 20A 20B 40A 40B (A B Pair)