

Xtensys - CATx KVM Switch



Universal Matrix Console Switch

- CATx 가
- UTP Skew
- 1600 x 1200 가
- , CPU
- 0-16 User, 1-64 CPU
- - KVM
-

Xtensys

Rose 가

KVM

RJ45 Input

Xtensys

KVM

Xtensys

Onscreen Display Hot-Key

XTR-11

Xtensys

KVM

KVM

XTR-14

XTR-14

KVM

KVM

Xtensys

KVM

/

Xtensys

/

- Auto Equalization Skew Compensation CAT5, 5e, 6, 7
- PS/2, USB, Sun, Unix, Mac
-
-
- Advanced OSD 가
- CATx
-
-
- 0-16 User, 1-64 CPU 가
- 1 KVM 1 RJ45 , 1KVM 4 RJ45 가
-

Xtensys – CATx KVM Switch

Product Part #	Description
Xtensys Switches - 1 User	
XTS-V0x04D1-L	1x4 - 1 Local PS2 User, VGA, 4 CPUs
XTS-V0x08D2-L	1x8 - 1 Local PS2 User, VGA, 8 CPUs
XTS-V0x16D4-L	1x16 - 1 Local PS2 User - VGA, 16 CPUs
XTS-V0x32D8-L	1x32 - 1 Local PS2 User - VGA, 32 CPUs
XTS-V0x48D12-L	1x48 - 1 Local PS2 User - VGA, 48 CPUs
XTS-V0x64D16-L	1x64 - 1 Local PS2 User - VGA, 64 CPUs
Xtensys Switches - 2 Users	
XTS-V2x04D2-L	2x4 - 1 Local PS2 User, VGA, 2 Remote Users, 4 CPUs
XTS-V2x08D2-L	2x8 - 1 Local PS2 User, VGA, 2 Remote Users, 8 CPUs
XTS-V2x16D4-L	2x16 - 1 Local PS2 User, VGA, 2 Remote Users, 16 CPUs
XTS-V2x32D8-L	2x32 - 1 Local PS2 User, VGA, 2 Remote Users, 32 CPUs
XTS-V2x48D12-L	2x48 - 1 Local PS2 User, VGA, 2 Remote Users, 48 CPUs
XTS-V2x64D16-L	2x64 - 1 Local PS2 User, VGA, 2 Remote Users, 64 CPUs
Xtensys Switches - 4 Users	
XTS-V4x08D4-L	4x8 - 1 Local PS2 User, VGA, 4 Remote Users, 8 CPUs
XTS-V4x16D4-L	4x16 - 1 Local PS2 User, VGA, 4 Remote Users, 16 CPUs
XTS-V4x32D8-L	4x32 - 1 Local PS2 User, VGA, 4 Remote Users, 32 CPUs
XTS-V4x48D12-L	4x48 - 1 Local PS2 User, VGA, 4 Remote Users, 48 CPUs
XTS-V4x64D16-L	4x64 - 1 Local PS2 User, VGA, 4 Remote Users, 64 CPUs
Xtensys Switches - 8 Users	
XTS-V8x16D8-L	8x16 - 1 Local PS2 User, VGA, 8 Remote Users, 16 CPUs
XTS-V8x32D8-L	8x32 - 1 Local PS2 User, VGA, 8 Remote Users, 32 CPUs
XTS-V8x48D12-L	8x48 - 1 Local PS2 User, VGA, 8 Remote Users, 48 CPUs
XTS-V8x64D16-L	8x64 - 1 Local PS2 User, VGA, 8 Remote Users, 64 CPUs
Xtensys Switches - 16 Users	
XTS-V16x64D16-L	16x64 - 1 Local PS2 User - VGA, 16 Remote Users, 64 CPUs
Local Ports	
-L	1 Local PS/2 Port
-LU	1 Local Port with PS/2 & USB

Xtensys – CATx KVM Switch

Remote User KVM Stations

XTR-11	CATx, VGA, PS2 Keyboard & Mouse, 1 RJ45 connection
XTR-11-U	CATx, VGA, USB/PS2 Keyboard & Mouse, 1 RJ45 connection
XTR-14	CATx, VGA, PS2 Keyboard & Mouse, 4 RJ45 connections
XTR-14-U	CATx, VGA, USB/PS2 Keyboard & Mouse, 4 RJ45 connections

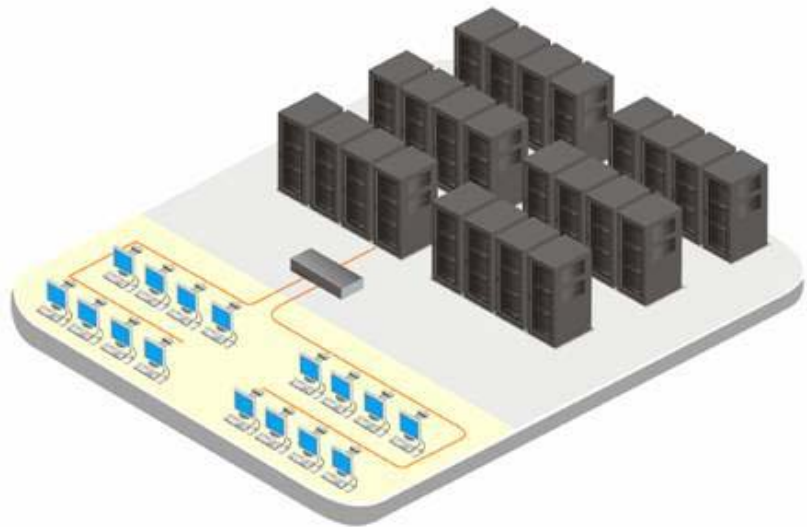
CATx Transmitters

XTT-MP	CATx, VGA, PS2 Keyboard & Mouse, 1 RJ45 connection
XTT-MU	CATx, VGA, USB Keyboard & Mouse, 1 RJ45 connection
XTT-MPU	CATx, VGA, USB/PS2 Keyboard & Mouse, 1 RJ45 connection
XTT-MP2	CATx, VGA, PS2 Keyboard & Mouse, 2 RJ45 connections
XTT-MU2-2	CATx, VGA, USB Keyboard & Mouse, 2 RJ45 connections



<CAT5 Transmitter

>



<16 User

>